

| | | | | | | | | | | | |
|---|---|--|--|--|--|---|---|--|--|--|--|
| 071249369913 Rouge Signature I RULE | 071249369920 Rouge Signature I CREATE | 071249369937 Rouge Signature I EMPOWER | 071249369975 Rouge Signature I AM WORTH IT | 071249369890 Rouge Signature I ENJOY | 071249369982 Rouge Signature I EXPLORE | 071249369999 Rouge Signature I STAND | 071249370018 Rouge Signature I DARE | 071249369944 Rouge Signature I ACHIEVE | 071249369951 Rouge Signature I DON'T | 071249369968 Rouge Signature I REPRESENT | 071249369906 Rouge Signature I REBEL |
| ROUGE SIG LIP TRY 1.1 UNLIT** | | | | | | | | | | | |
| 071249135280 Infalible Lip Gloss Petal | 071249135372 Infalible Lip Gloss Bloom | 071249135396 Infalible Lip Gloss Modern Mauve | 071249135419 Infalible Lip Gloss Sangria | 071249216040 Infalible Lip Gloss Glistening Berry | 071249216064 Infalible Lip Gloss Pink Topaz | 071249216033 Infalible Lip Gloss Cherry Flash | 071249216057 Infalible Lip Gloss Red Fatale | 071249135310 Infalible Lip Gloss Rebel Red | 071249135327 Infalible Lip Gloss Suede | 071249135358 Infalible Lip Gloss Truffle | 071249135433 Infalible Lip Gloss Coral Sands |
| INF LIP GLS TRY 1.1 UNLT ** | | | | | | | | | | | |
| 071249355862 Colour Riche Shine Dazzling Doe | 071249355879 Colour Riche Shine Glossy Fawn | 071249355886 Colour Riche Shine Varnished Rosewood | 071249355848 Colour Riche Shine Burnished Blush | 071249355831 Colour Riche Shine Sparkling Rose | 071249355787 Colour Riche Shine Glazed Pink | 071249355800 Colour Riche Shine Laminated Fuchsia | 071249355817 Colour Riche Shine Polished Tango | 071249355824 Colour Riche Shine Luminous Coral | 071249355893 Colour Riche Shine Enamel Red | 071249355909 Colour Riche Shine Glassy Garnet | 071249355923 Colour Riche Shine Splendid Blackberry |
| CR SHINE LIP TRY 1.1 UNLIT ** | | | | | | | | | | | |
| 071249349748 Colour Riche Matte Lipstick | 071249349731 Colour Riche Matte Lipstick | 071249349724 Colour Riche Matte Lipstick | 071249349717 Colour Riche Matte Lipstick | 071249316177 Colour Riche Collection Exclusive | 071249349700 Colour Riche Matte Lipstick | 071249316191 Colour Riche Collection Exclusive | 071249349663 Colour Riche Matte Lipstick | 071249296620 Colour Riche Collection Exclusive | 071249296486 Colour Riche Collection Exclusive | 0712493 0712493 | 0712493 0712493 |
| CR MATTE LIP & LIPLNR TRY 1.1 UNLIT ** | | | | | | | | | | | |
| 071249256206 Colour Riche Lipcolour | 071249045701 Colour Riche Lipcolour | 071249083352 Colour Riche Lipcolour | 071249083352 Colour Riche Lipcolour | 071249074534 Colour Riche Lipcolour | 071249256213 Colour Riche Lipcolour | 071249256220 Colour Riche Lipcolour | 071249256237 Colour Riche Lipcolour | 071249256244 Colour Riche Lipcolour | 071249074541 Colour Riche Lipcolour | 071249045855 Colour Riche Lipcolour | 071249045855 Colour Riche Lipcolour |
| CR LIP TRY 1.4 UNLT ** | | | | | | | | | | | |
| 071249045824 Colour Riche Lipcolour | 071249256251 Colour Riche Lipcolour | 071249256268 Colour Riche Lipcolour | 071249256275 Colour Riche Lipcolour | 071249045633 Colour Riche Lipcolour | 071249083376 Colour Riche Lipcolour | 071249083376 Colour Riche Lipcolour | 071249045640 Colour Riche Lipcolour | 071249216378 Colour Riche Lipcolour | 071249083727 Colour Riche Lipcolour | 071249074558 Colour Riche Lipcolour | 071249216385 Colour Riche Lipcolour |
| CR LIP TRY 2.4 UNLT ** | | | | | | | | | | | |
| 071249074527 Colour Riche Lipcolour | 071249074527 Colour Riche Lipcolour | 071249083321 Colour Riche Lipcolour | 071249083321 Colour Riche Lipcolour | 071249045787 Colour Riche Lipcolour | 071249045770 Colour Riche Lipcolour | 071249216392 Colour Riche Lipcolour | 071249083765 Colour Riche Lipcolour | 071249216408 Colour Riche Lipcolour | 071249083291 Colour Riche Lipcolour | 071249045664 Colour Riche Lipcolour | 071249045992 Colour Riche Lipcolour |
| CR LIP TRY 3.4 UNLT ** | | | | | | | | | | | |
| 071249045961 Colour Riche Lipcolour | 071249045657 Colour Riche Lipcolour | 071249046012 Colour Riche Lipcolour | 071249046029 Colour Riche Lipcolour | 071249083512 Colour Riche Lipcolour | 071249083406 Colour Riche Lipcolour | 071249045954 Colour Riche Lipcolour | 071249045930 Colour Riche Lipcolour | 071249045930 Colour Riche Lipcolour | 071249045923 Colour Riche Lipcolour | 071249083222 Colour Riche Lipcolour | 071249045947 Colour Riche Lipcolour |
| CR LIP TRY 4.4 UNLT ** | | | | | | | | | | | |
| | | 071249210130 Magic Lumi Highlighter Fair | 071249210147 Magic Lumi Highlighter Light | 071249210154 Magic Lumi Highlighter Medium | 071249236390 Magic Lumi Highlighter Deep | 071249217436 Magic Lumi Light Infusing Primer Primer | | | | | 071249173169 Magic Perfecting Base Face Primer Magic Perfecting Base |
| MGC FMLY CMBO W/ 4 HGLGHTR TRY UNLIT** | | | | | | | | | | | |

LPS BRCKT

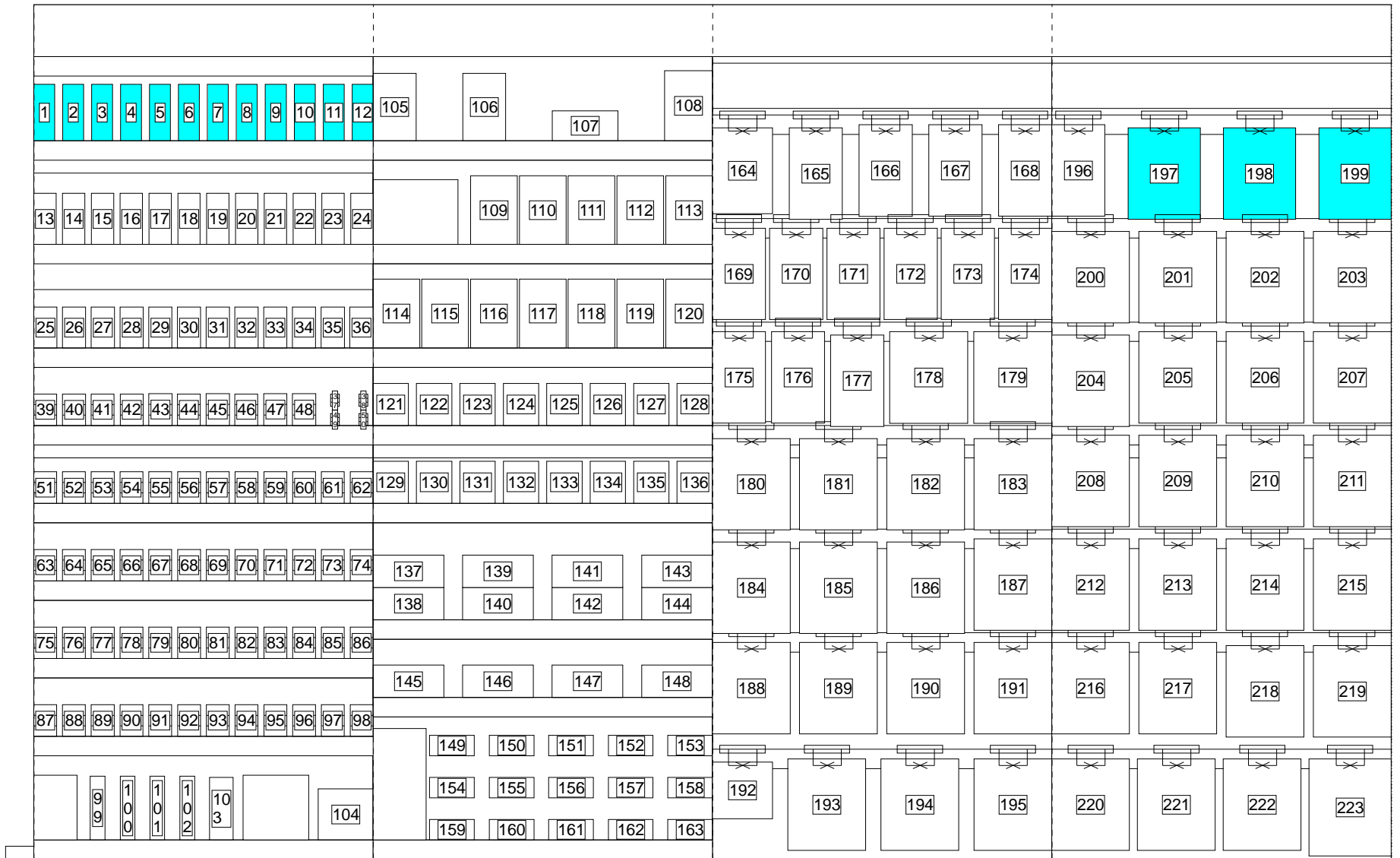
4' LP 4" HD

| | | | | | | | |
|--|---|--|---|--|--|--|---|
| 071249361504 Infallible Pro-Primer Infallible Matte-Lock Primer | 071249361511 Infallible Pro-Primer Infallible Glow-Lock Primer | 071249349038 Infallible Pro-Matte Setting Powder | | | 071249294055 Infallible Pro-Spray & Set Makeup Extender Setting Spray Pro-Mist & Set Makeup Extender Setting Spray | | |
| INF PRO-PRMR, PWDR & SPRAY TRY 1.1 UNLIT ** | | | | | | | |
| | 071249335369 Infallible Total Cover Foundation Classic Ivory | 071249335376 Infallible Total Cover Foundation Creamy Natural | 071249335383 Infallible Total Cover Foundation Nude Beige | 071249335390 Infallible Total Cover Foundation Natural Buff | 071249335406 Infallible Total Cover Foundation Natural Beige | | |
| INF TOTAL CVR FNDTN TRY 1.2 UNLIT ** | | | | | | | |
| 071249335413 Infallible Total Cover Foundation Buff Beige | 071249335420 Infallible Total Cover Foundation Sand Beige | 071249335437 Infallible Total Cover Foundation Sun Beige | 071249335444 Infallible Total Cover Foundation Caramel Beige | 071249335451 Infallible Total Cover Foundation Classic Tan | 071249335468 Infallible Total Cover Foundation Creme Cafe | 071249335475 Infallible Total Cover Foundation Cocoa | |
| INF TOTAL CVR FNDTN TRY 2.2 UNLIT ** | | | | | | | |
| 071249078549 True Match Liquid Foundation Porcelain | 071249078563 True Match Liquid Foundation Light Ivory | 071249078600 True Match Liquid Foundation Nude Beige | 071249078631 True Match Liquid Foundation Natural Beige | 071249078648 True Match Liquid Foundation Sand Beige | 071249078686 True Match Liquid Foundation Sun Beige | 071249078570 True Match Liquid Foundation Soft Ivory | 071249078587 True Match Liquid Foundation Classic Ivory |
| FOOD TM MU TRAY 1.2 UNLIT ** | | | | | | | |
| 071249078624 True Match Liquid Foundation Natural Buff | 071249078662 True Match Liquid Foundation Buff Beige | 071249078693 True Match Liquid Foundation True Beige | 071249078723 True Match Liquid Foundation Honey Beige | 071249078556 True Match Liquid Foundation Alabaster | 071249078594 True Match Liquid Foundation Natural Ivory | 071249078617 True Match Liquid Foundation Creamy Natural | 071249078679 True Match Liquid Foundation Classic Beige |
| FOOD TM MU TRAY 2.2 UNLIT ** | | | | | | | |
| 071249016411 True Match Powder Porcelain | | 071249016428 True Match Powder Light Ivory | | 071249016435 True Match Powder Nude Beige | | 071249016442 True Match Powder Natural Beige | |
| 071249017173 True Match Powder Soft Ivory | | 071249017180 True Match Powder Classic Ivory | | 071249017197 True Match Powder Natural Buff | | 071249017227 True Match Powder Buff Beige | |
| TM PWDR 2T TRY 1.1 EW UNLIT FOOD ** | | | | | | | |
| 071249017456 True Match Blush Barely Blushing | | 071249017487 True Match Blush Innocent Flush | | 071249017500 True Match Blush Baby Blossom | | 071249017517 True Match Blush Tender Rose | |
| FOOD TM BLSH TRY 1.1 UNLIT ** | | | | | | | |
| | 071249199237 | 071249199213 | 071249199312 | 071249199305 | 071249214633 | | |
| | 071249214596 | 071249199299 | 071249214640 | 071249214626 | 071249199244 | | |
| | 071249214602 | 071249214619 | 071249199220 | 071249199251 | 071249199275 | | |
| INF SHDW 3-TIER TRY UNLIT** | | | | | | | |

DR-UNLT **

| UNLIMITED MASCARA GP 1.2 (4X12) ** | | | | | |
|--|--|---|---|---|--|
| UNBELIEVA-BROW HKBR 5HK UNLIT (ALT) ** | | | | | |
| 071249376416 Unbelieva-Brow Dark Brunette | 071249339626 Brow Stylist Kabuki Blender Brunette | 071249238912 Infallible The Super Slim Liner Black | 071249152416 Infallible Eyeliner Carbon Black Carbon Black | 071249145234 Infallible Long Wear Eyeliner Black | |
| LIN INT BRUSH TIP HKBR 6HK UNLIT (ALT) ** | | | | | |
| 071249117675 Lineur Intense Felt Tip Liquid Eyeliner Carbon Black Carbon Black | 071249059128 Lineur Intense Felt Tip Liquid Eyeliner Black Mica | 071249855010 Lineur Intense Brush Tip Liquid Eyeliner Black | 071249117682 Pencil Perfect Carbon Black Carbon Black | 071249082119 Pencil Perfect Eye Liner Ebony | 071249082140 Pencil Perfect Eye Liner Espresso |
| TLSCPC LNR HKBR 5HK UNLIT (ALT) ** | | | | | |
| 071249137086 Telescopic Carbon Black Liner Carbon Black | 071249119990 Telescopic Eyeliner Black | 071249161906 Telescopic Waterproof Eyeliner Black | 071249149768 Double Extend Beauty Tubes Blackest Black | 071249149744 Double Extend Beauty Tubes Black | |
| VLMNS SPRSTR MSCR HKBR 4HK UNLIT (ALT) ** | | | | | |
| 071249301494 Voluminous Superstar Mascara Blackest Black (WSH) | 071249301500 Voluminous Superstar Mascara Black (WSH) | 071249301470 Voluminous Superstar Mascara Superstar WTP : Blackest Black (WTP) | 071249301487 Voluminous Superstar Mascara Superstar WTP : Black (WTP) | | |
| X-FIBER MSCR HKBR 4HK UNLIT (ALT) ** | | | | | |
| 071249363713 X-Fiber Mascara WSH Blackest Black WSH | 071249363720 X-Fiber Mascara WSH Black WSH | 071249363737 X-Fiber Mascara WTP Blackest Black WTP | 071249104743 Telescopic Mascara Blackest Black | | |
| VLMNS BTRFLY MSCR HKBR 4HK UNLIT (ALT) ** | | | | | |
| 071249256718 Voluminous Butterfly Washable Mascara Blackest Black | 071249256701 Voluminous Butterfly Washable Mascara Black | 071249314111 Voluminous Butterfly Sculpt WSH Blackest Black | 071249148822 Extra Volume Collagen Washable Blackest Black | | |
| EMR SINGLE TRY HOOKBAR 3HK UNLIT (ALT) ** | | | | | |
| 071249078525 Eye Makeup Remover Eye Makeup Remover | 071249187739 Voluminous Million Lashes Mascara Blackest Black | 071249187722 Voluminous Million Lashes Mascara Black | 071249188125 Voluminous Million Lashes Mascara Black Brown | | |

| UNLIMITED MASCARA GP 2.2 (4X12) ** | | | |
|--|---|--|---|
| 071249160114 Extra Intense Liquid Pencil Eyeliner Black | 071249335857 Unlimited Blackest Black | 071249335871 Unlimited Black Brown | 071249335888 Unlimited Blackest Black WTP |
| 071249376331 Voluminous Lash Paradise Primer Pink Tinted Primer | 071249343265 Voluminous Lash Paradise WSH Blackest Black | 071249343272 Voluminous Lash Paradise WSH Black Brown | 071249343326 Voluminous Lash Paradise WTP Blackest Black |
| 071249330265 Voluminous Primer Primer | 071249059098 Voluminous Straight Brush Blackest Black | 071249749012 Voluminous Straight Brush Black | 071249669020 Voluminous Straight Brush Black Brown |
| 071249019344 Voluminous Curved Brush Black | 071249019351 Voluminous Curved Brush Black Brown | 071249006412 Voluminous Waterproof Black | 071249006429 Voluminous Waterproof Black Brown |
| 071249104729 Telescopic Mascara Black | 071249104736 Telescopic Mascara Black Brown | 071249101919 Voluminous Carbon Black Carbon Black | 071249148792 Voluminous Waterproof Carbon Black Carbon Black |
| 071249148808 Extra Volume Collagen Washable Black | 071249156339 Extra Volume Collagen Waterproof Blackest Black | 071249324707 Voluminous Feline WSH Blackest Black WSH | 071249334348 Voluminous Feline WSH Blackest Noir WSH |
| 071249195499 Voluminous Million Lashes Waterproof Masc Blackest Black | 071249195482 Voluminous Million Lashes Waterproof Masc Black | 071249201770 Voluminous Million Lashes Carbon Carbon Black | 071249194102 Voluminous False Lashes Mascara Blackest Black |



POSITION REPORT

Category Mgmt. Dept.11/2/2018

ACCOUNT: WEIS (UNLIT ECLIPSE WALL)

4' X 66" HIGH L'OREAL COSMETICS LAYOUT - SPRING 2019

WES0466ECUL_IS19.psa

| ROUGE SIG LIP TRY 1.1 UNLIT** | | | | | |
|---|---------|--------------|-----------------|---------------|------------|
| Height = 1.50 in; Width = 12.00 in; Depth = 8.75 in | | | | | |
| Loc. ID | Facings | UPC | Description | Shade | Plano Code |
| 1 | 1 | 071249369913 | Rouge Signature | I RULE | 414 |
| 2 | 1 | 071249369920 | Rouge Signature | I CREATE | 416 |
| 3 | 1 | 071249369937 | Rouge Signature | I EMPOWER | 418 |
| 4 | 1 | 071249369975 | Rouge Signature | I AM WORTH IT | 426 |
| 5 | 1 | 071249369980 | Rouge Signature | I ENJOY | 410 |
| 6 | 1 | 071249369982 | Rouge Signature | I EXPLORE | 428 |
| 7 | 1 | 071249369999 | Rouge Signature | I STAND | 430 |
| 8 | 1 | 071249370018 | Rouge Signature | I DARE | 432 |
| 9 | 1 | 071249369944 | Rouge Signature | I ACHIEVE | 420 |
| 10 | 1 | 071249369951 | Rouge Signature | I DON'T | 422 |
| 11 | 1 | 071249369968 | Rouge Signature | I REPRESENT | 424 |
| 12 | 1 | 071249369906 | Rouge Signature | I REBEL | 412 |

| INF LIP GLS TRY 1.1 UNLT ** | | | | | |
|---|---------|--------------|---------------------|------------------|------------|
| Height = 1.50 in; Width = 12.00 in; Depth = 8.75 in | | | | | |
| Loc. ID | Facings | UPC | Description | Shade | Plano Code |
| 13 | 1 | 071249135280 | Infalible Lip Gloss | Petal | 105 |
| 14 | 1 | 071249135372 | Infalible Lip Gloss | Bloom | 125 |
| 15 | 1 | 071249135396 | Infalible Lip Gloss | Modern Mauve | 505 |
| 16 | 1 | 071249135419 | Infalible Lip Gloss | Sangria | 705 |
| 17 | 1 | 071249216040 | Infalible Lip Gloss | Glistening Berry | 240 |
| 18 | 1 | 071249216064 | Infalible Lip Gloss | Pink Topaz | 140 |
| 19 | 1 | 071249216033 | Infalible Lip Gloss | Cherry Flash | 340 |
| 20 | 1 | 071249216057 | Infalible Lip Gloss | Red Fatale | 320 |
| 21 | 1 | 071249135310 | Infalible Lip Gloss | Rebel Red | 315 |
| 22 | 1 | 071249135327 | Infalible Lip Gloss | Suede | 805 |
| 23 | 1 | 071249135358 | Infalible Lip Gloss | Truffle | 835 |
| 24 | 1 | 071249135433 | Infalible Lip Gloss | Coral Sands | 405 |

| CR SHINE LIP TRY 1.1 UNLIT ** | | | | | |
|---|---------|--------------|--------------------|---------------------|------------|
| Height = 1.50 in; Width = 12.00 in; Depth = 8.75 in | | | | | |
| Loc. ID | Facings | UPC | Description | Shade | Plano Code |
| 25 | 1 | 071249355862 | Colour Riche Shine | Dazzling Doe | 902 |
| 26 | 1 | 071249355879 | Colour Riche Shine | Glossy Fawn | 900 |
| 27 | 1 | 071249355886 | Colour Riche Shine | Varnished Rosewood | 904 |
| 28 | 1 | 071249355848 | Colour Riche Shine | Burnished Blush | 906 |
| 29 | 1 | 071249355831 | Colour Riche Shine | Sparkling Rose | 908 |
| 30 | 1 | 071249355787 | Colour Riche Shine | Glazed Pink | 914 |
| 31 | 1 | 071249355800 | Colour Riche Shine | Laminated Fuchsia | 922 |
| 32 | 1 | 071249355817 | Colour Riche Shine | Polished Tango | 918 |
| 33 | 1 | 071249355824 | Colour Riche Shine | Luminous Coral | 916 |
| 34 | 1 | 071249355893 | Colour Riche Shine | Enamel Red | 924 |
| 35 | 1 | 071249355909 | Colour Riche Shine | Glassy Garnet | 926 |
| 36 | 1 | 071249355923 | Colour Riche Shine | Splendid Blackberry | 930 |

| CR MATTE LIP & LIPLNR TRY 1.1 UNLIT ** | | | | | |
|---|---------|--------------|---|----------------------------|------------|
| Height = 1.50 in; Width = 12.00 in; Depth = 8.00 in | | | | | |
| Loc. ID | Facings | UPC | Description | Shade | Plano Code |
| 37 | 1 | 071249350430 | Colour Riche Matte Lip Liner | In-matte-uated With You | 102 |
| 38 | 1 | 071249350447 | Colour Riche Matte Lip Liner | Curiosity Killed the Matte | 104 |
| 39 | 1 | 071249349748 | Colour Riche Matte Lipstick | Matte-itude | 806 |
| 40 | 1 | 071249349731 | Colour Riche Matte Lipstick | He Thinks Hes Matte-cho | 804 |
| 41 | 1 | 071249349724 | Colour Riche Matte Lipstick | Matte-sterpiece | 802 |
| 42 | 1 | 071249349717 | Colour Riche Matte Lipstick | Matte-caron | 800 |
| 43 | 1 | 071249316177 | Colour Riche Collection Exclusive Pinks | Matte-Moiselle Pink | 703 |
| 44 | 1 | 071249349700 | Colour Riche Matte Lipstick | Matte Mandate | 712 |
| 45 | 1 | 071249316191 | Colour Riche Collection Exclusive Pinks | Berry Matte Pink | 705 |
| 46 | 1 | 071249349663 | Colour Riche Matte Lipstick | Doesn't Matte-r | 405 |

Prepared by: Loreal CPD Category Management

Door Count as of Print Date: 35

FULL WALL

Page: 8 of 13

Date : 02-Nov-2018

FILE: VFSUSNAS18\CPDNY_Groups\sales\UKB\LPCosmetics\UKBRReports\2019\Spring\PENDING\POG\WES0466ECU

POSITION REPORT

Category Mgmt. Dept.11/2/2018

ACCOUNT: WEIS (UNLIT ECLIPSE WALL)

4' X 66" HIGH L'OREAL COSMETICS LAYOUT - SPRING 2019

WES0466ECUL_IS19.psa

| | | | | | |
|----|---|--------------|--|-------------------------|-----|
| 47 | 1 | 071249296820 | Colour Riche Collection Exclusive Reds | Devils Matte-Vocate Red | 402 |
| 48 | 1 | 071249296486 | Colour Riche Collection Exclusive Reds | Matte-Traction Red | 403 |
| 49 | 1 | 071249350461 | Colour Riche Matte Lip Liner | Best Mattes | 108 |
| 50 | 1 | 071249350478 | Colour Riche Matte Lip Liner | Matte's It | 110 |

CR LIP TRY 1.4 UNLT ** Height = 1.50 in; Width = 12.00 in; Depth = 8.75 in

| Loc. ID | Facings | UPC | Description | Shade | Plano Code |
|---------|---------|--------------|------------------------|--------------------|------------|
| 51 | 1 | 071249256206 | Colour Riche Lipcolour | Ballerina Shoes | 135 |
| 52 | 1 | 071249045701 | Colour Riche Lipcolour | Mauved | 140 |
| 53 | 1 | 071249083352 | Colour Riche Lipcolour | Tickled Pink | 165 |
| 54 | 1 | 071249083352 | Colour Riche Lipcolour | Tickled Pink | 165 |
| 55 | 1 | 071249074534 | Colour Riche Lipcolour | Peony Pink | 580 |
| 56 | 1 | 071249256213 | Colour Riche Lipcolour | I Pink You're Cute | 175 |
| 57 | 1 | 071249256220 | Colour Riche Lipcolour | Pink Flamingo | 180 |
| 58 | 1 | 071249256237 | Colour Riche Lipcolour | Miss Magenta | 185 |
| 59 | 1 | 071249256244 | Colour Riche Lipcolour | Wisteria Rose | 251 |
| 60 | 1 | 071249074541 | Colour Riche Lipcolour | Blushing Berry | 590 |
| 61 | 1 | 071249045855 | Colour Riche Lipcolour | Mica | 620 |
| 62 | 1 | 071249045855 | Colour Riche Lipcolour | Mica | 620 |

CR LIP TRY 2.4 UNLT ** Height = 1.50 in; Width = 12.00 in; Depth = 8.75 in

| Loc. ID | Facings | UPC | Description | Shade | Plano Code |
|---------|---------|--------------|------------------------|-----------------|------------|
| 63 | 1 | 071249045824 | Colour Riche Lipcolour | Saucy Mauve | 560 |
| 64 | 1 | 071249256251 | Colour Riche Lipcolour | Everbloom | 254 |
| 65 | 1 | 071249256268 | Colour Riche Lipcolour | Raspberry Rush | 260 |
| 66 | 1 | 071249256275 | Colour Riche Lipcolour | Fresh as a Rose | 262 |
| 67 | 1 | 071249045633 | Colour Riche Lipcolour | Classic Wine | 752 |
| 68 | 1 | 071249083376 | Colour Riche Lipcolour | Sugar Plum | 754 |
| 69 | 1 | 071249083376 | Colour Riche Lipcolour | Sugar Plum | 754 |
| 70 | 1 | 071249045640 | Colour Riche Lipcolour | Spiced Cider | 755 |
| 71 | 1 | 071249216378 | Colour Riche Lipcolour | Plum Explosion | 766 |
| 72 | 1 | 071249083727 | Colour Riche Lipcolour | Divine Wine | 762 |
| 73 | 1 | 071249074558 | Colour Riche Lipcolour | Raisin Rapture | 892 |
| 74 | 1 | 071249216385 | Colour Riche Lipcolour | Golden Grape | 788 |

CR LIP TRY 3.4 UNLT ** Height = 1.50 in; Width = 12.00 in; Depth = 8.75 in

| Loc. ID | Facings | UPC | Description | Shade | Plano Code |
|---------|---------|--------------|------------------------|----------------|------------|
| 75 | 1 | 071249074527 | Colour Riche Lipcolour | Peach Fuzz | 417 |
| 76 | 1 | 071249074527 | Colour Riche Lipcolour | Peach Fuzz | 417 |
| 77 | 1 | 071249083321 | Colour Riche Lipcolour | Tropical Coral | 444 |
| 78 | 1 | 071249083321 | Colour Riche Lipcolour | Tropical Coral | 444 |
| 79 | 1 | 071249045787 | Colour Riche Lipcolour | Volcanic | 410 |
| 80 | 1 | 071249045770 | Colour Riche Lipcolour | British Red | 350 |
| 81 | 1 | 071249216392 | Colour Riche Lipcolour | Ruby Flame | 317 |
| 82 | 1 | 071249083765 | Colour Riche Lipcolour | True Red | 315 |
| 83 | 1 | 071249216408 | Colour Riche Lipcolour | Blazing Lava | 303 |
| 84 | 1 | 071249083291 | Colour Riche Lipcolour | Fairest Nude | 800 |
| 85 | 1 | 071249045664 | Colour Riche Lipcolour | Toasted Almond | 843 |
| 86 | 1 | 071249045992 | Colour Riche Lipcolour | Brazil Nut | 850 |

CR LIP TRY 4.4 UNLT ** Height = 1.50 in; Width = 12.00 in; Depth = 8.75 in

| Loc. ID | Facings | UPC | Description | Shade | Plano Code |
|---------|---------|--------------|------------------------|-----------------|------------|
| 87 | 1 | 071249045961 | Colour Riche Lipcolour | Nature's Blush | 840 |
| 88 | 1 | 071249045657 | Colour Riche Lipcolour | Cinnamon Toast | 839 |
| 89 | 1 | 071249046012 | Colour Riche Lipcolour | Sunwash | 857 |
| 90 | 1 | 071249046029 | Colour Riche Lipcolour | Spice | 860 |
| 91 | 1 | 071249083512 | Colour Riche Lipcolour | Golden Splendor | 805 |

Prepared by: Loreal CPD Category Management

Door Count as of Print Date: 35

FULL WALL

Page: 9 of 13

Date : 02-Nov-2018

FILE: VFSUSNAS18\CPDNY_Groups\sales\UKB\LPCosmetics\UKBRReports\2019\Spring\PENDING\POG\WES0466ECU

POSITION REPORT

Category Mgmt. Dept.11/2/2018

ACCOUNT: WEIS (UNLIT ECLIPSE WALL)

4' X 66" HIGH L'OREAL COSMETICS LAYOUT - SPRING 2019

WES0466ECUL_IS19.psa

| | | | | | |
|----|---|--------------|------------------------|---------------|-----|
| 92 | 1 | 071249083406 | Colour Riche Lipcolour | Caramel Latte | 799 |
| 93 | 1 | 071249045954 | Colour Riche Lipcolour | Bronze Coin | 835 |
| 94 | 1 | 071249045930 | Colour Riche Lipcolour | Sandstone | 810 |
| 95 | 1 | 071249045930 | Colour Riche Lipcolour | Sandstone | 810 |
| 96 | 1 | 071249045923 | Colour Riche Lipcolour | Silverstone | 760 |
| 97 | 1 | 071249083222 | Colour Riche Lipcolour | Ginger Spice | 815 |
| 98 | 1 | 071249045947 | Colour Riche Lipcolour | Bronzine | 825 |

MGC FMLY CMBO W/ 4 HGLGHTR TRY UNLIT** Height = 1.50 in; Width = 12.00 in; Depth = 8.00 in

| Loc. ID | Facings | UPC | Description | Shade | Plano Code |
|---------|---------|--------------|-----------------------------------|-----------------------|------------|
| 99 | 1 | 071249210130 | Magic Lumi Highlighter | Fair | 860 |
| 100 | 1 | 071249210147 | Magic Lumi Highlighter | Light | 862 |
| 101 | 1 | 071249210154 | Magic Lumi Highlighter | Medium | 864 |
| 102 | 1 | 071249236390 | Magic Lumi Highlighter | Deep | 866 |
| 103 | 1 | 071249217436 | Magic Lumi Light Infusing Primer | Primer | 896 |
| 104 | 1 | 071249173169 | Magic Perfecting Base Face Primer | Magic Perfecting Base | 890 |

INF PRO-PRMR, PWDR & SPRAY TRY 1.1 UNLIT ** Height = 1.50 in; Width = 12.00 in; Depth = 8.00 in

| Loc. ID | Facings | UPC | Description | Shade | Plano Code |
|---------|---------|--------------|---|--|------------|
| 105 | 1 | 071249361504 | Infalible Pro-Primer | Infalible Matte-Lock Primer | 120 |
| 106 | 1 | 071249361511 | Infalible Pro-Primer | Infalible Glow-Lock Primer | 130 |
| 107 | 1 | 071249349038 | Infalible Pro-Matte Setting Powder | Translucent | 610 |
| 108 | 1 | 071249294055 | Infalible Pro-Spray & Set Makeup Extender Setting Spray | Pro-Mist & Set Makeup Extender Setting Spray | 215 |

INF TOTAL CVR FNDTN TRY 1.2 UNLIT ** Height = 1.50 in; Width = 12.00 in; Depth = 8.00 in

| Loc. ID | Facings | UPC | Description | Shade | Plano Code |
|---------|---------|--------------|----------------------------------|----------------|------------|
| 109 | 1 | 071249335369 | Infalible Total Cover Foundation | Classic Ivory | 301 |
| 110 | 1 | 071249335376 | Infalible Total Cover Foundation | Creamy Natural | 302 |
| 111 | 1 | 071249335383 | Infalible Total Cover Foundation | Nude Beige | 303 |
| 112 | 1 | 071249335390 | Infalible Total Cover Foundation | Natural Buff | 304 |
| 113 | 1 | 071249335406 | Infalible Total Cover Foundation | Natural Beige | 305 |

INF TOTAL CVR FNDTN TRY 2.2 UNLIT ** Height = 1.50 in; Width = 12.00 in; Depth = 8.00 in

| Loc. ID | Facings | UPC | Description | Shade | Plano Code |
|---------|---------|--------------|----------------------------------|---------------|------------|
| 114 | 1 | 071249335413 | Infalible Total Cover Foundation | Buff Beige | 306 |
| 115 | 1 | 071249335420 | Infalible Total Cover Foundation | Sand Beige | 307 |
| 116 | 1 | 071249335437 | Infalible Total Cover Foundation | Sun Beige | 308 |
| 117 | 1 | 071249335444 | Infalible Total Cover Foundation | Caramel Beige | 309 |
| 118 | 1 | 071249335451 | Infalible Total Cover Foundation | Classic Tan | 310 |
| 119 | 1 | 071249335468 | Infalible Total Cover Foundation | Creme Cafe | 311 |
| 120 | 1 | 071249335475 | Infalible Total Cover Foundation | Cocoa | 312 |

FOOD TM MU TRAY 1.2 UNLIT ** Height = 1.50 in; Width = 12.00 in; Depth = 8.75 in

| Loc. ID | Facings | UPC | Description | Shade | Plano Code |
|---------|---------|--------------|------------------------------|---------------|------------|
| 121 | 1 | 071249078549 | True Match Liquid Foundation | Porcelain | W1 |
| 122 | 1 | 071249078563 | True Match Liquid Foundation | Light Ivory | W2 |
| 123 | 1 | 071249078600 | True Match Liquid Foundation | Nude Beige | W3 |
| 124 | 1 | 071249078631 | True Match Liquid Foundation | Natural Beige | W4 |
| 125 | 1 | 071249078648 | True Match Liquid Foundation | Sand Beige | W5 |
| 126 | 1 | 071249078686 | True Match Liquid Foundation | Sun Beige | W6 |
| 127 | 1 | 071249078570 | True Match Liquid Foundation | Soft Ivory | N1 |
| 128 | 1 | 071249078587 | True Match Liquid Foundation | Classic Ivory | N2 |

FOOD TM MU TRAY 2.2 UNLIT ** Height = 1.50 in; Width = 12.00 in; Depth = 8.75 in

| Loc. ID | Facings | UPC | Description | Shade | Plano Code |
|---------|---------|--------------|------------------------------|--------------|------------|
| 129 | 1 | 071249078624 | True Match Liquid Foundation | Natural Buff | N3 |

Prepared by: Loreal CPD Category Management

Door Count as of Print Date: 35

FULL WALL

Page: 10 of 13

Date : 02-Nov-2018

FILE: VFSUSNAS18\CPDNY_Groups\sales\UKB\LPCosmetics\UKBReports\2019\Spring\PENDING\POG\WES0466ECI

POSITION REPORT

Category Mgmt. Dept.11/2/2018

ACCOUNT: WEIS (UNLIT ECLIPSE WALL)

4' X 66" HIGH L'OREAL COSMETICS LAYOUT - SPRING 2019

WES0466ECUL_IS19.psa

| | | | | | |
|-----|---|--------------|------------------------------|----------------|----|
| 130 | 1 | 071249078662 | True Match Liquid Foundation | Buff Beige | N4 |
| 131 | 1 | 071249078693 | True Match Liquid Foundation | True Beige | N5 |
| 132 | 1 | 071249078723 | True Match Liquid Foundation | Honey Beige | N6 |
| 133 | 1 | 071249078556 | True Match Liquid Foundation | Alabaster | C1 |
| 134 | 1 | 071249078594 | True Match Liquid Foundation | Natural Ivory | C2 |
| 135 | 1 | 071249078617 | True Match Liquid Foundation | Creamy Natural | C3 |
| 136 | 1 | 071249078679 | True Match Liquid Foundation | Classic Beige | C5 |

TM PWDR 2T TRY 1.1 EW UNLIT FOOD ** Height = 1.50 in; Width = 12.00 in; Depth = 8.75 in

| Loc. ID | Facings | UPC | Description | Shade | Plano Code |
|---------|---------|--------------|-------------------|---------------|------------|
| 137 | 1 | 071249016411 | True Match Powder | Porcelain | W1 |
| 138 | 1 | 071249017173 | True Match Powder | Soft Ivory | N1 |
| 139 | 1 | 071249016428 | True Match Powder | Light Ivory | W2 |
| 140 | 1 | 071249017180 | True Match Powder | Classic Ivory | N2 |
| 141 | 1 | 071249016435 | True Match Powder | Nude Beige | W3 |
| 142 | 1 | 071249017197 | True Match Powder | Natural Buff | N3 |
| 143 | 1 | 071249016442 | True Match Powder | Natural Beige | W4 |
| 144 | 1 | 071249017227 | True Match Powder | Buff Beige | N4 |

FOOD TM BLSH TRY 1.1 UNLIT ** Height = 1.50 in; Width = 12.00 in; Depth = 8.75 in

| Loc. ID | Facings | UPC | Description | Shade | Plano Code |
|---------|---------|--------------|------------------|-----------------|------------|
| 145 | 1 | 071249017456 | True Match Blush | Barely Blushing | W3-4 |
| 146 | 1 | 071249017487 | True Match Blush | Innocent Flush | N3-4 |
| 147 | 1 | 071249017500 | True Match Blush | Baby Blossom | C1-2 |
| 148 | 1 | 071249017517 | True Match Blush | Tender Rose | C3-4 |

INF SHDW 3-TIER TRY UNLIT** Height = 1.50 in; Width = 12.00 in; Depth = 8.00 in

| Loc. ID | Facings | UPC | Description | Shade | Plano Code |
|---------|---------|--------------|------------------|-------------------|------------|
| 149 | 1 | 071249199237 | Infalible Shadow | Endless Pearl | 899 |
| 150 | 1 | 071249199213 | Infalible Shadow | Iced Latte | 888 |
| 151 | 1 | 071249199312 | Infalible Shadow | Eternal Sunshine | 997 |
| 152 | 1 | 071249199305 | Infalible Shadow | Amber Rush | 892 |
| 153 | 1 | 071249214633 | Infalible Shadow | Bottomless Java | 800 |
| 154 | 1 | 071249214596 | Infalible Shadow | Liquid Diamond | 996 |
| 155 | 1 | 071249199299 | Infalible Shadow | Perpetual Purple | 555 |
| 156 | 1 | 071249214640 | Infalible Shadow | Smoldering Plum | 556 |
| 157 | 1 | 071249214626 | Infalible Shadow | Glistening Garnet | 557 |
| 158 | 1 | 071249199244 | Infalible Shadow | Bronzed Taupe | 890 |
| 159 | 1 | 071249214602 | Infalible Shadow | Golden Emerald | 335 |
| 160 | 1 | 071249214619 | Infalible Shadow | Endless Sea | 337 |
| 161 | 1 | 071249199220 | Infalible Shadow | Midnight Blue | 889 |
| 162 | 1 | 071249199251 | Infalible Shadow | Eternal Black | 999 |
| 163 | 1 | 071249199275 | Infalible Shadow | Sultry Smoke | 998 |

UNBELIEVA-BROW HKBR 5HK UNLIT (ALT) ** Height = 1.50 in; Width = 12.00 in; Depth = 8.75 in

| Loc. ID | Facings | UPC | Description | Shade | Plano Code |
|---------|---------|--------------|---------------------------------|---------------|------------|
| 164 | 1 | 071249376416 | Unbelieva-Brow | Dark Brunette | 575 |
| 165 | 1 | 071249339626 | Brow Stylist Kabuki Blender | Brunette | 313 |
| 166 | 1 | 071249238912 | Infalible The Super Slim Liner | Black | 400 |
| 167 | 1 | 071249152416 | Infalible Eyeliner Carbon Black | Carbon Black | 591 |
| 168 | 1 | 071249145234 | Infalible Long Wear Eyeliner | Black | 511 |

LIN INT BRUSH TIP HKBR 6HK UNLIT (ALT) ** Height = 1.50 in; Width = 12.00 in; Depth = 8.75 in

| Loc. ID | Facings | UPC | Description | Shade | Plano Code |
|---------|---------|--------------|--|--------------|------------|
| 169 | 1 | 071249117675 | Lineur Intense Felt Tip Liquid Eyeliner Carbon Black | Carbon Black | 690 |
| 170 | 1 | 071249059128 | Lineur Intense Felt Tip Liquid Eyeliner | Black Mica | 610 |

Prepared by: Loreal CPD Category Management

Door Count as of Print Date: 35

FULL WALL

Page: 11 of 13

Date : 02-Nov-2018

FILE: VFSUSNAS18\CPDNY_Group\sales\UKB\LPCosmetics\UKBRReports\2019\Spring\PENDING\POG\WES0466ECI

POSITION REPORT

Category Mgmt. Dept.11/2/2018

ACCOUNT: WEIS (UNLIT ECLIPSE WALL)

4' X 66" HIGH L'OREAL COSMETICS LAYOUT - SPRING 2019

WES0466ECUL_IS19.psa

| | | | | | |
|-----|---|--------------|--|--------------|-----|
| 171 | 1 | 071249855010 | Lineur Intense Brush Tip Liquid Eyeliner | Black | 710 |
| 172 | 1 | 071249117682 | Pencil Perfect Carbon Black | Carbon Black | 190 |
| 173 | 1 | 071249082119 | Pencil Perfect Eye Liner | Ebony | 110 |
| 174 | 1 | 071249082140 | Pencil Perfect Eye Liner | Espresso | 130 |

| TLSCPC LNR HKBR 5HK UNLIT (ALT) ** Height = 1.50 in; Width = 12.00 in; Depth = 8.75 in | | | | | |
|--|---------|--------------|--------------------------------|----------------|------------|
| Loc. ID | Facings | UPC | Description | Shade | Plano Code |
| 175 | 1 | 071249137086 | Telescopic Carbon Black Liner | Carbon Black | 835 |
| 176 | 1 | 071249119990 | Telescopic Eyeliner | Black | 810 |
| 177 | 1 | 071249161906 | Telescopic Waterproof Eyeliner | Black | 800 |
| 178 | 1 | 071249149768 | Double Extend Beauty Tubes | Blackest Black | 575 |
| 179 | 1 | 071249149744 | Double Extend Beauty Tubes | Black | 570 |

| VLMNS SPRSTR MSCR HKBR 4HK UNLIT (ALT) ** Height = 1.50 in; Width = 12.00 in; Depth = 8.75 in | | | | | |
|---|---------|--------------|------------------------------|--------------------------------------|------------|
| Loc. ID | Facings | UPC | Description | Shade | Plano Code |
| 180 | 1 | 071249301494 | Voluminous Superstar Mascara | Blackest Black (WSH) | 621 |
| 181 | 1 | 071249301500 | Voluminous Superstar Mascara | Black (WSH) | 622 |
| 182 | 1 | 071249301470 | Voluminous Superstar Mascara | Superstar WTP : Blackest Black (WTP) | 624 |
| 183 | 1 | 071249301487 | Voluminous Superstar Mascara | Superstar WTP : Black (WTP) | 625 |

| X-FIBER MSCR HKBR 4HK UNLIT (ALT) ** Height = 1.50 in; Width = 12.00 in; Depth = 8.75 in | | | | | |
|--|---------|--------------|---------------------|--------------------|------------|
| Loc. ID | Facings | UPC | Description | Shade | Plano Code |
| 184 | 1 | 071249363713 | X-Fiber Mascara WSH | Blackest Black WSH | 213 |
| 185 | 1 | 071249363720 | X-Fiber Mascara WSH | Black WSH | 214 |
| 186 | 1 | 071249363737 | X-Fiber Mascara WTP | Blackest Black WTP | 215 |
| 187 | 1 | 071249104743 | Telescopic Mascara | Blackest Black | 910 |

| VLMNS BTRFLY MSCR HKBR 4HK UNLIT (ALT) ** Height = 1.50 in; Width = 12.00 in; Depth = 8.75 in | | | | | |
|---|---------|--------------|---------------------------------------|----------------|------------|
| Loc. ID | Facings | UPC | Description | Shade | Plano Code |
| 188 | 1 | 071249256718 | Voluminous Butterfly Washable Mascara | Blackest Black | 868 |
| 189 | 1 | 071249256701 | Voluminous Butterfly Washable Mascara | Black | 867 |
| 190 | 1 | 071249314111 | Voluminous Butterfly Sculpt WSH | Blackest Black | 873 |
| 191 | 1 | 071249148822 | Extra Volume Collagen Washable | Blackest Black | 680 |

| EMR SINGLE TRY HOOKBAR 3HK UNLIT (ALT) ** Height = 1.50 in; Width = 12.00 in; Depth = 8.75 in | | | | | |
|---|---------|--------------|-----------------------------------|--------------------|------------|
| Loc. ID | Facings | UPC | Description | Shade | Plano Code |
| 192 | 1 | 071249078525 | Eye Makeup Remover | Eye Makeup Remover | 001 |
| 193 | 1 | 071249187739 | Voluminous Million Lashes Mascara | Blackest Black | 635 |
| 194 | 1 | 071249187722 | Voluminous Million Lashes Mascara | Black | 645 |
| 195 | 1 | 071249188125 | Voluminous Million Lashes Mascara | Black Brown | 655 |

| UNLIMITED MSCR HKBR 4HK UNLIT (ALT) ** Height = 1.50 in; Width = 12.00 in; Depth = 8.75 in | | | | | |
|--|---------|--------------|--------------------------------------|--------------------|------------|
| Loc. ID | Facings | UPC | Description | Shade | Plano Code |
| 196 | 1 | 071249160114 | Extra Intense Liquid Pencil Eyeliner | Black | 798 |
| 197 | 1 | 071249335857 | Unlimited | Blackest Black | 235 |
| 198 | 1 | 071249335871 | Unlimited | Black Brown | 236 |
| 199 | 1 | 071249335888 | Unlimited | Blackest Black WTP | 240 |

| VLMNS LSH PRDS MSCR (WSH) HKBR 4HK UNLIT (ALT) ** Height = 1.50 in; Width = 12.00 in; Depth = 8.75 in | | | | | |
|---|---------|--------------|---------------------------------|--------------------|------------|
| Loc. ID | Facings | UPC | Description | Shade | Plano Code |
| 200 | 1 | 071249376331 | Voluminous Lash Paradise Primer | Pink Tinted Primer | 250 |
| 201 | 1 | 071249343265 | Voluminous Lash Paradise WSH | Blackest Black | 200 |
| 202 | 1 | 071249343272 | Voluminous Lash Paradise WSH | Black Brown | 202 |
| 203 | 1 | 071249343326 | Voluminous Lash Paradise WTP | Blackest Black | 204 |

Prepared by: Loreal CPD Category Management

Door Count as of Print Date: 35

FULL WALL

Page: 12 of 13

Date : 02-Nov-2018

FILE: VFSUSNAS18\CPDNY_Groups\sales\IKB\LPCosmetics\IKBR\Reports\2019\Spring\PENDING\POG\WES0466ECU

POSITION REPORT

Category Mgmt. Dept.11/2/2018

ACCOUNT: WEIS (UNLIT ECLIPSE WALL)

4' X 66" HIGH L'OREAL COSMETICS LAYOUT - SPRING 2019

WES0466ECUL_IS19.psa

| VLMNS MSCR HKBR 4HK UNLIT (ALT) ** | | | | | |
|---|---------|--------------|---------------------------|----------------|------------|
| Height = 1.50 in; Width = 12.00 in; Depth = 8.75 in | | | | | |
| Loc. ID | Facings | UPC | Description | Shade | Plano Code |
| 204 | 1 | 071249330265 | Voluminous Primer | Primer | 300 |
| 205 | 1 | 071249059098 | Voluminous Straight Brush | Blackest Black | 310 |
| 206 | 1 | 071249749012 | Voluminous Straight Brush | Black | 305 |
| 207 | 1 | 071249669020 | Voluminous Straight Brush | Black Brown | 315 |

| VLMNS WP HKBR 4HK UNLIT (ALT) ** | | | | | |
|---|---------|--------------|-------------------------|-------------|------------|
| Height = 1.50 in; Width = 12.00 in; Depth = 8.75 in | | | | | |
| Loc. ID | Facings | UPC | Description | Shade | Plano Code |
| 208 | 1 | 071249019344 | Voluminous Curved Brush | Black | 340 |
| 209 | 1 | 071249019351 | Voluminous Curved Brush | Black Brown | 350 |
| 210 | 1 | 071249006412 | Voluminous Waterproof | Black | 360 |
| 211 | 1 | 071249006429 | Voluminous Waterproof | Black Brown | 365 |

| TLSCPC HKBR 4HK UNLIT (ALT) ** | | | | | |
|---|---------|--------------|------------------------------------|--------------|------------|
| Height = 1.50 in; Width = 12.00 in; Depth = 8.75 in | | | | | |
| Loc. ID | Facings | UPC | Description | Shade | Plano Code |
| 212 | 1 | 071249104729 | Telescopic Mascara | Black | 905 |
| 213 | 1 | 071249104736 | Telescopic Mascara | Black Brown | 915 |
| 214 | 1 | 071249101919 | Voluminous Carbon Black | Carbon Black | 335 |
| 215 | 1 | 071249148792 | Voluminous Waterproof Carbon Black | Carbon Black | 395 |

| XTR VOL CLGN WSBL HKBR 4HK UNLIT (ALT) ** | | | | | |
|---|---------|--------------|----------------------------------|--------------------|------------|
| Height = 1.50 in; Width = 12.00 in; Depth = 8.75 in | | | | | |
| Loc. ID | Facings | UPC | Description | Shade | Plano Code |
| 216 | 1 | 071249148808 | Extra Volume Collagen Washable | Black | 675 |
| 217 | 1 | 071249156339 | Extra Volume Collagen Waterproof | Blackest Black | 695 |
| 218 | 1 | 071249324707 | Voluminous Feline WSH | Blackest Black WSH | 627 |
| 219 | 1 | 071249334348 | Voluminous Feline WSH | Blackest Noir WSH | 633 |

| VLMNS MIL LSHES HKBR 4HK UNLIT (ALT) ** | | | | | |
|---|---------|--------------|---|----------------|------------|
| Height = 1.50 in; Width = 12.00 in; Depth = 8.75 in | | | | | |
| Loc. ID | Facings | UPC | Description | Shade | Plano Code |
| 220 | 1 | 071249195499 | Voluminous Million Lashes Waterproof Masc | Blackest Black | 630 |
| 221 | 1 | 071249195482 | Voluminous Million Lashes Waterproof Masc | Black | 670 |
| 222 | 1 | 071249201770 | Voluminous Million Lashes Carbon | Carbon Black | 620 |
| 223 | 1 | 071249194102 | Voluminous False Lashes Mascara | Blackest Black | 270 |

Prepared by: Loreal CPD Category Management

Door Count as of Print Date: 35

FULL WALL

Page: 13 of 13

Date : 02-Nov-2018